

March 24, 2026



worldreideye and 3 others
The Nora District

worldreideye @norawestpalm is stepping into its next chapter with the debut of its first residential address.

The launch of Nora House marks a pivotal moment for the fast-evolving neighborhood, introducing luxury for-sale living into a district already buzzing with curated retail, dining, and creative office spaces. Developed by The Ronto Group in partnership with @ndtdevelopment, Place Projects, and Wheelock Street Capital, the 11-story condominium will bring 117 residences and nearly 19,000 square feet of ground-floor commercial space to North Railroad Avenue—further anchoring Nora as a vibrant, walkable urban hub.

Designed with a refined, contemporary sensibility, residences feature expansive layouts, top-tier appliances, and elevated finishes, complemented by a robust amenity program spanning landscaped courtyards, rooftop leisure spaces, and wellness-driven interiors. As the district continues to build momentum—with the upcoming Nora Hotel and an eclectic mix of tenants from beloved eateries to lifestyle brands—Nora House signals a defining shift toward a fully realized live-work-play destination in the heart of West Palm Beach.

Renderings by @commonground.studios

Edited · 23h

Like Comment Share

Liked by tatigomez221_ and others
1 day ago

Add a comment... Post

worldreideye and 3 others
The Nora District

worldreideye @norawestpalm is stepping into its next chapter with the debut of its first residential address.

The launch of Nora House marks a pivotal moment for the fast-evolving neighborhood, introducing luxury for-sale living into a district already buzzing with curated retail, dining, and creative office spaces. Developed by The Ronto Group in partnership with @ndtdevelopment, Place Projects, and Wheelock Street Capital, the 11-story condominium will bring 117 residences and nearly 19,000 square feet of ground-floor commercial space to North Railroad Avenue—further anchoring Nora as a vibrant, walkable urban hub.

Designed with a refined, contemporary sensibility, residences feature expansive layouts, top-tier appliances, and elevated finishes, complemented by a robust amenity program spanning landscaped courtyards, rooftop leisure spaces, and wellness-driven interiors. As the district continues to build momentum—with the upcoming Nora Hotel and an eclectic mix of tenants from beloved eateries to lifestyle brands—Nora House signals a defining shift toward a fully realized live-work-play destination in the heart of West Palm Beach.

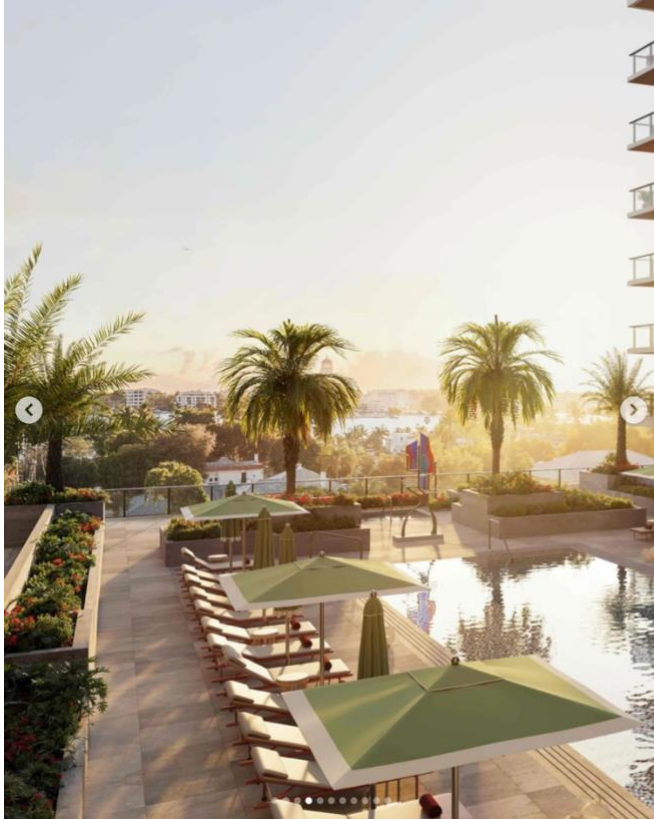
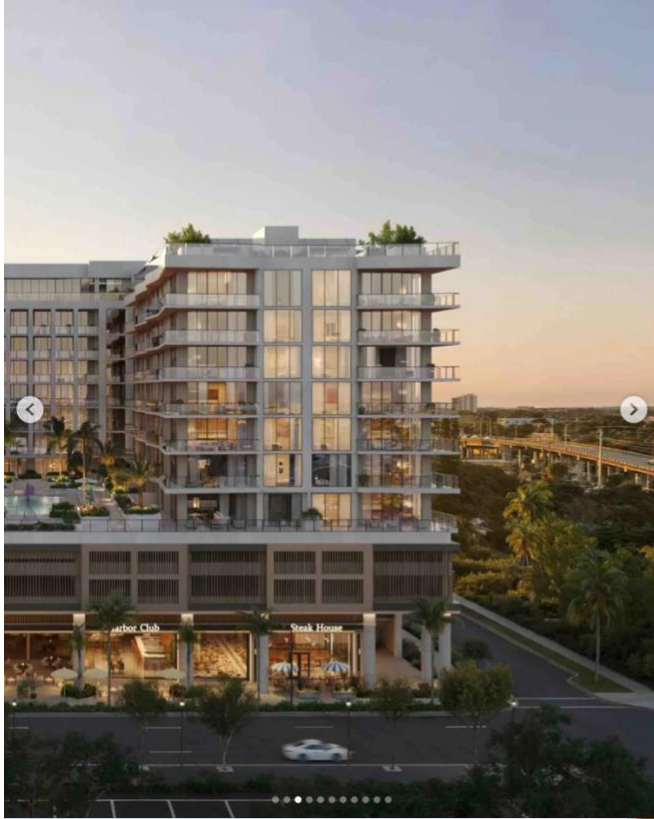
Renderings by @commonground.studios

Edited · 23h

Like Comment Share

Liked by tatigomez221_ and others
1 day ago

Add a comment... Post



worldreideye and 3 others
The Nora District

worldreideye @norwestpalm is stepping into its next chapter with the debut of its first residential address.

The launch of Nora House marks a pivotal moment for the fast-evolving neighborhood, introducing luxury for-sale living into a district already buzzing with curated retail, dining, and creative office spaces. Developed by The Ronto Group in partnership with @ndtdevelopment, Place Projects, and Wheelock Street Capital, the 11-story condominium will bring 117 residences and nearly 19,000 square feet of ground-floor commercial space to North Railroad Avenue—further anchoring Nora as a vibrant, walkable urban hub.

Designed with a refined, contemporary sensibility, residences feature expansive layouts, top-tier appliances, and elevated finishes, complemented by a robust amenity program spanning landscaped courtyards, rooftop leisure spaces, and wellness-driven interiors. As the district continues to build momentum—with the upcoming Nora Hotel and an eclectic mix of tenants from beloved eateries to lifestyle brands—Nora House signals a defining shift toward a fully realized live-work-play destination in the heart of West Palm Beach.

Renderings by @commonground.studios

Edited · 23h



Liked by tatigomez221_ and others
1 day ago

Add a comment... Post

worldreideye and 3 others
The Nora District

worldreideye @norwestpalm is stepping into its next chapter with the debut of its first residential address.

The launch of Nora House marks a pivotal moment for the fast-evolving neighborhood, introducing luxury for-sale living into a district already buzzing with curated retail, dining, and creative office spaces. Developed by The Ronto Group in partnership with @ndtdevelopment, Place Projects, and Wheelock Street Capital, the 11-story condominium will bring 117 residences and nearly 19,000 square feet of ground-floor commercial space to North Railroad Avenue—further anchoring Nora as a vibrant, walkable urban hub.

Designed with a refined, contemporary sensibility, residences feature expansive layouts, top-tier appliances, and elevated finishes, complemented by a robust amenity program spanning landscaped courtyards, rooftop leisure spaces, and wellness-driven interiors. As the district continues to build momentum—with the upcoming Nora Hotel and an eclectic mix of tenants from beloved eateries to lifestyle brands—Nora House signals a defining shift toward a fully realized live-work-play destination in the heart of West Palm Beach.

Renderings by @commonground.studios

Edited · 23h



Liked by tatigomez221_ and others
1 day ago

Add a comment... Post



worldreideye and 3 others
The Nora District

worldreideye [@norawestpalm](#) is stepping into its next chapter with the debut of its first residential address.

The launch of Nora House marks a pivotal moment for the fast-evolving neighborhood, introducing luxury for-sale living into a district already buzzing with curated retail, dining, and creative office spaces. Developed by The Ronto Group in partnership with [@ndtdevelopment](#), Place Projects, and Wheelock Street Capital, the 11-story condominium will bring 117 residences and nearly 19,000 square feet of ground-floor commercial space to North Railroad Avenue—further anchoring Nora as a vibrant, walkable urban hub.

Designed with a refined, contemporary sensibility, residences feature expansive layouts, top-tier appliances, and elevated finishes, complemented by a robust amenity program spanning landscaped courtyards, rooftop leisure spaces, and wellness-driven interiors. As the district continues to build momentum—with the upcoming Nora Hotel and an eclectic mix of tenants from beloved eateries to lifestyle brands—Nora House signals a defining shift toward a fully realized live-work-play destination in the heart of West Palm Beach.

Renderings by [@commonground.studios](#)

Edited · 23h

👍 🗨️ 📌

Liked by [tatigomez221_](#) and others
1 day ago

😊 Add a comment... [Post](#)

worldreideye and 3 others
The Nora District

worldreideye [@norawestpalm](#) is stepping into its next chapter with the debut of its first residential address.

The launch of Nora House marks a pivotal moment for the fast-evolving neighborhood, introducing luxury for-sale living into a district already buzzing with curated retail, dining, and creative office spaces. Developed by The Ronto Group in partnership with [@ndtdevelopment](#), Place Projects, and Wheelock Street Capital, the 11-story condominium will bring 117 residences and nearly 19,000 square feet of ground-floor commercial space to North Railroad Avenue—further anchoring Nora as a vibrant, walkable urban hub.

Designed with a refined, contemporary sensibility, residences feature expansive layouts, top-tier appliances, and elevated finishes, complemented by a robust amenity program spanning landscaped courtyards, rooftop leisure spaces, and wellness-driven interiors. As the district continues to build momentum—with the upcoming Nora Hotel and an eclectic mix of tenants from beloved eateries to lifestyle brands—Nora House signals a defining shift toward a fully realized live-work-play destination in the heart of West Palm Beach.

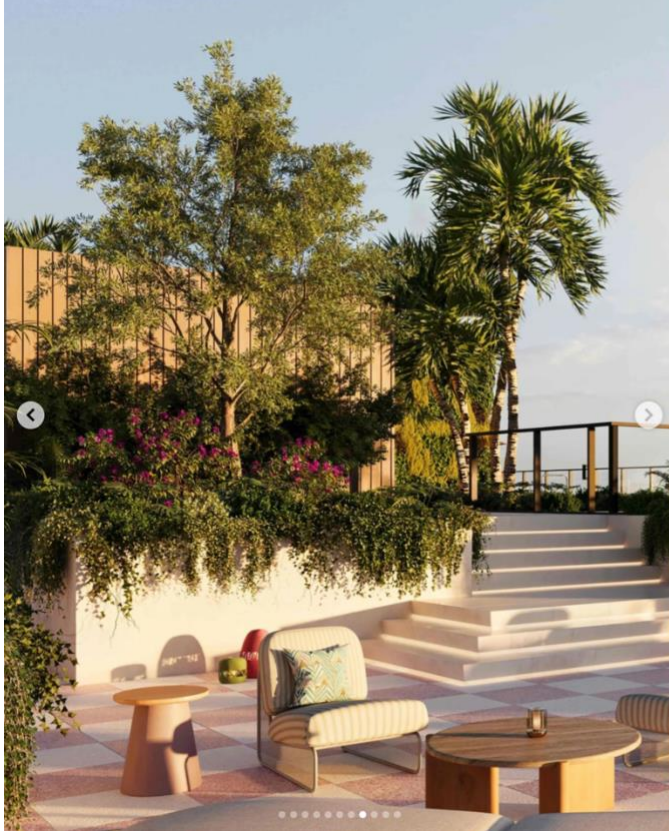
Renderings by [@commonground.studios](#)

Edited · 23h

👍 🗨️ 📌

Liked by [tatigomez221_](#) and others
1 day ago

😊 Add a comment... [Post](#)



worldreideye and 3 others
The Nora District

worldreideye [@norawestpalm](#) is stepping into its next chapter with the debut of its first residential address.

The launch of Nora House marks a pivotal moment for the fast-evolving neighborhood, introducing luxury for-sale living into a district already buzzing with curated retail, dining, and creative office spaces. Developed by The Ronto Group in partnership with [@ndtdevelopment](#), Place Projects, and Wheelock Street Capital, the 11-story condominium will bring 117 residences and nearly 19,000 square feet of ground-floor commercial space to North Railroad Avenue—further anchoring Nora as a vibrant, walkable urban hub.

Designed with a refined, contemporary sensibility, residences feature expansive layouts, top-tier appliances, and elevated finishes, complemented by a robust amenity program spanning landscaped courtyards, rooftop leisure spaces, and wellness-driven interiors. As the district continues to build momentum—with the upcoming Nora Hotel and an eclectic mix of tenants from beloved eateries to lifestyle brands—Nora House signals a defining shift toward a fully realized live-work-play destination in the heart of West Palm Beach.

Renderings by [@commonground.studios](#)
Edited · 23h

♥ 🔍 🗒️
Liked by [tatigomez221_](#) and others
1 day ago

😊 Add a comment... [Post](#)

worldreideye and 3 others
The Nora District

worldreideye [@norawestpalm](#) is stepping into its next chapter with the debut of its first residential address.

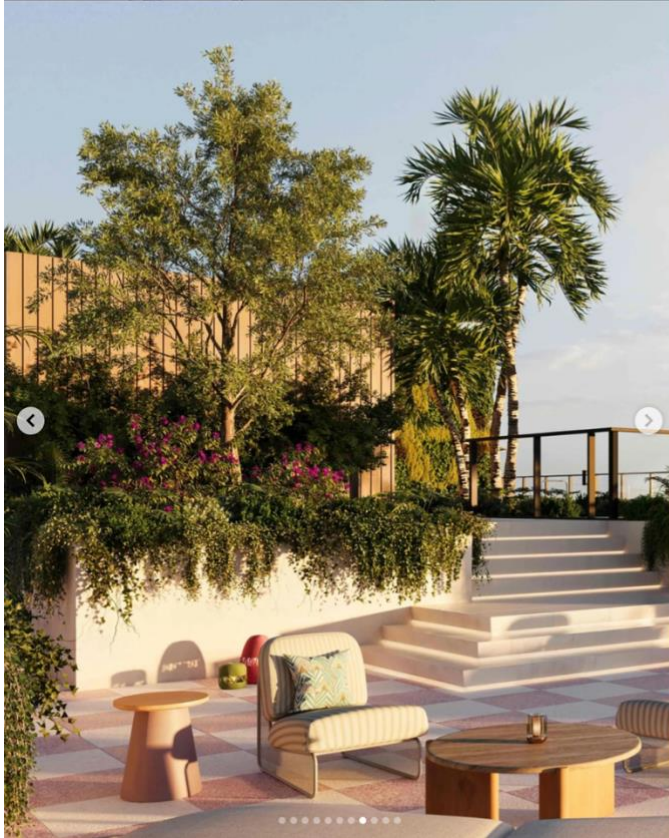
The launch of Nora House marks a pivotal moment for the fast-evolving neighborhood, introducing luxury for-sale living into a district already buzzing with curated retail, dining, and creative office spaces. Developed by The Ronto Group in partnership with [@ndtdevelopment](#), Place Projects, and Wheelock Street Capital, the 11-story condominium will bring 117 residences and nearly 19,000 square feet of ground-floor commercial space to North Railroad Avenue—further anchoring Nora as a vibrant, walkable urban hub.

Designed with a refined, contemporary sensibility, residences feature expansive layouts, top-tier appliances, and elevated finishes, complemented by a robust amenity program spanning landscaped courtyards, rooftop leisure spaces, and wellness-driven interiors. As the district continues to build momentum—with the upcoming Nora Hotel and an eclectic mix of tenants from beloved eateries to lifestyle brands—Nora House signals a defining shift toward a fully realized live-work-play destination in the heart of West Palm Beach.

Renderings by [@commonground.studios](#)
Edited · 23h

♥ 🔍 🗒️
Liked by [tatigomez221_](#) and others
1 day ago

😊 Add a comment... [Post](#)



worldreideye and 3 others
The Nora District

worldreideye [@norawestpalm](#) is stepping into its next chapter with the debut of its first residential address.

The launch of Nora House marks a pivotal moment for the fast-evolving neighborhood, introducing luxury for-sale living into a district already buzzing with curated retail, dining, and creative office spaces. Developed by The Ronto Group in partnership with [@ndtdevelopment](#), Place Projects, and Wheelock Street Capital, the 11-story condominium will bring 117 residences and nearly 19,000 square feet of ground-floor commercial space to North Railroad Avenue—further anchoring Nora as a vibrant, walkable urban hub.

Designed with a refined, contemporary sensibility, residences feature expansive layouts, top-tier appliances, and elevated finishes, complemented by a robust amenity program spanning landscaped courtyards, rooftop leisure spaces, and wellness-driven interiors. As the district continues to build momentum—with the upcoming Nora Hotel and an eclectic mix of tenants from beloved eateries to lifestyle brands—Nora House signals a defining shift toward a fully realized live-work-play destination in the heart of West Palm Beach.

Renderings by [@commonground.studios](#)
Edited · 23h

👍 🗨️ 📌

Liked by [tatigomez221_](#) and others
1 day ago

😊 Add a comment... [Post](#)

worldreideye and 3 others
The Nora District

worldreideye [@norawestpalm](#) is stepping into its next chapter with the debut of its first residential address.

The launch of Nora House marks a pivotal moment for the fast-evolving neighborhood, introducing luxury for-sale living into a district already buzzing with curated retail, dining, and creative office spaces. Developed by The Ronto Group in partnership with [@ndtdevelopment](#), Place Projects, and Wheelock Street Capital, the 11-story condominium will bring 117 residences and nearly 19,000 square feet of ground-floor commercial space to North Railroad Avenue—further anchoring Nora as a vibrant, walkable urban hub.

Designed with a refined, contemporary sensibility, residences feature expansive layouts, top-tier appliances, and elevated finishes, complemented by a robust amenity program spanning landscaped courtyards, rooftop leisure spaces, and wellness-driven interiors. As the district continues to build momentum—with the upcoming Nora Hotel and an eclectic mix of tenants from beloved eateries to lifestyle brands—Nora House signals a defining shift toward a fully realized live-work-play destination in the heart of West Palm Beach.

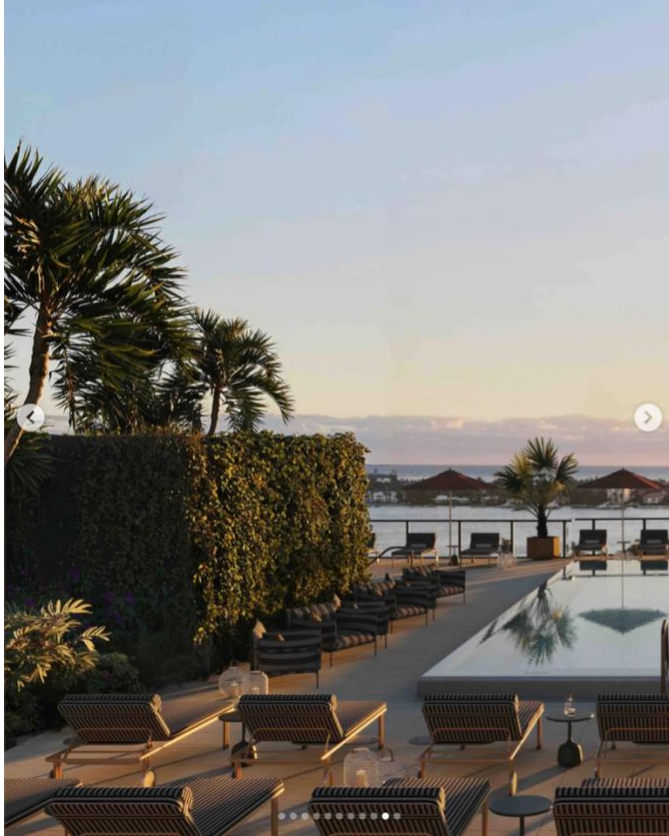
Renderings by [@commonground.studios](#)
Edited · 23h

👍 🗨️ 📌

Liked by [tatigomez221_](#) and others
1 day ago

😊 Add a comment... [Post](#)





worldreideye and 3 others
The Nora District

worldreideye @norawestpalm is stepping into its next chapter with the debut of its first residential address.

The launch of Nora House marks a pivotal moment for the fast-evolving neighborhood, introducing luxury for-sale living into a district already buzzing with curated retail, dining, and creative office spaces. Developed by The Ronto Group in partnership with @ndtdevelopment, Place Projects, and Wheelock Street Capital, the 11-story condominium will bring 117 residences and nearly 19,000 square feet of ground-floor commercial space to North Railroad Avenue—further anchoring Nora as a vibrant, walkable urban hub.

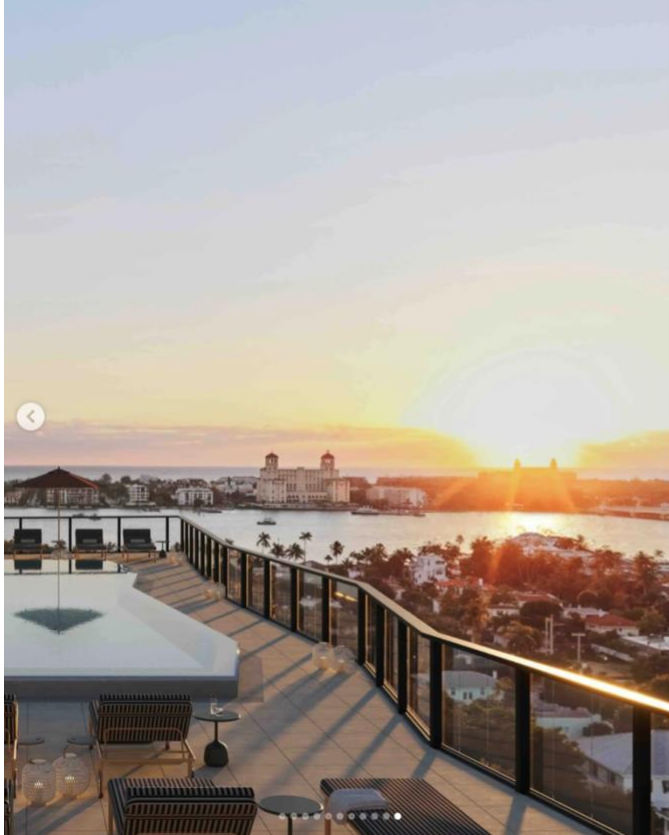
Designed with a refined, contemporary sensibility, residences feature expansive layouts, top-tier appliances, and elevated finishes, complemented by a robust amenity program spanning landscaped courtyards, rooftop leisure spaces, and wellness-driven interiors. As the district continues to build momentum—with the upcoming Nora Hotel and an eclectic mix of tenants from beloved eateries to lifestyle brands—Nora House signals a defining shift toward a fully realized live-work-play destination in the heart of West Palm Beach.

Renderings by @commonground.studios
Edited · 23h

Like Comment Share Bookmark

Liked by tatigomez221_ and others
1 day ago

Add a comment... Post



worldreideye and 3 others
The Nora District

worldreideye @norawestpalm is stepping into its next chapter with the debut of its first residential address.

The launch of Nora House marks a pivotal moment for the fast-evolving neighborhood, introducing luxury for-sale living into a district already buzzing with curated retail, dining, and creative office spaces. Developed by The Ronto Group in partnership with @ndtdevelopment, Place Projects, and Wheelock Street Capital, the 11-story condominium will bring 117 residences and nearly 19,000 square feet of ground-floor commercial space to North Railroad Avenue—further anchoring Nora as a vibrant, walkable urban hub.

Designed with a refined, contemporary sensibility, residences feature expansive layouts, top-tier appliances, and elevated finishes, complemented by a robust amenity program spanning landscaped courtyards, rooftop leisure spaces, and wellness-driven interiors. As the district continues to build momentum—with the upcoming Nora Hotel and an eclectic mix of tenants from beloved eateries to lifestyle brands—Nora House signals a defining shift toward a fully realized live-work-play destination in the heart of West Palm Beach.

Renderings by @commonground.studios
Edited · 23h

Like Comment Share Bookmark

Liked by tatigomez221_ and others
1 day ago

Add a comment... Post